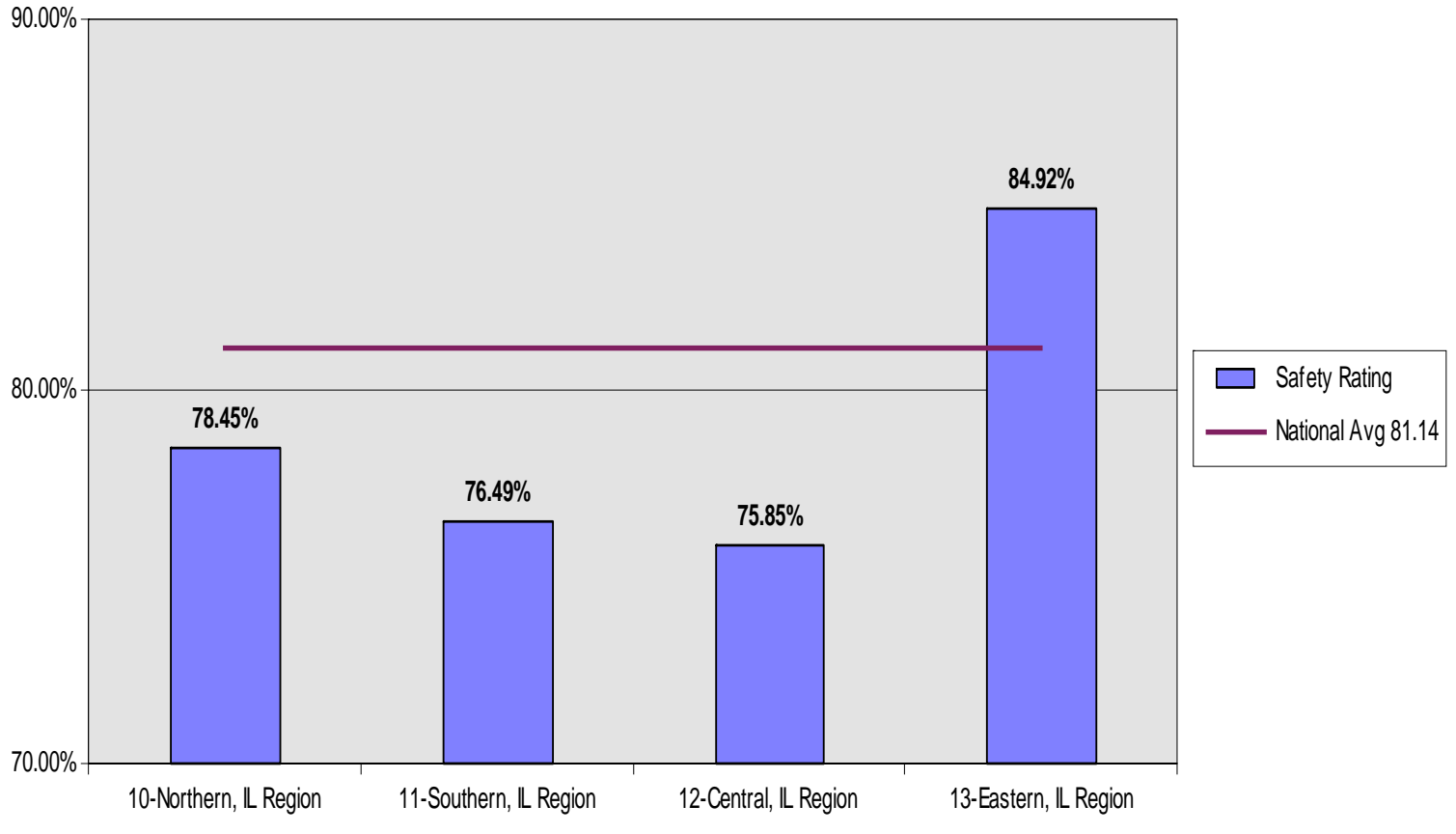


Confidential Division Safety Audit Score Ratings Thru April, 2006

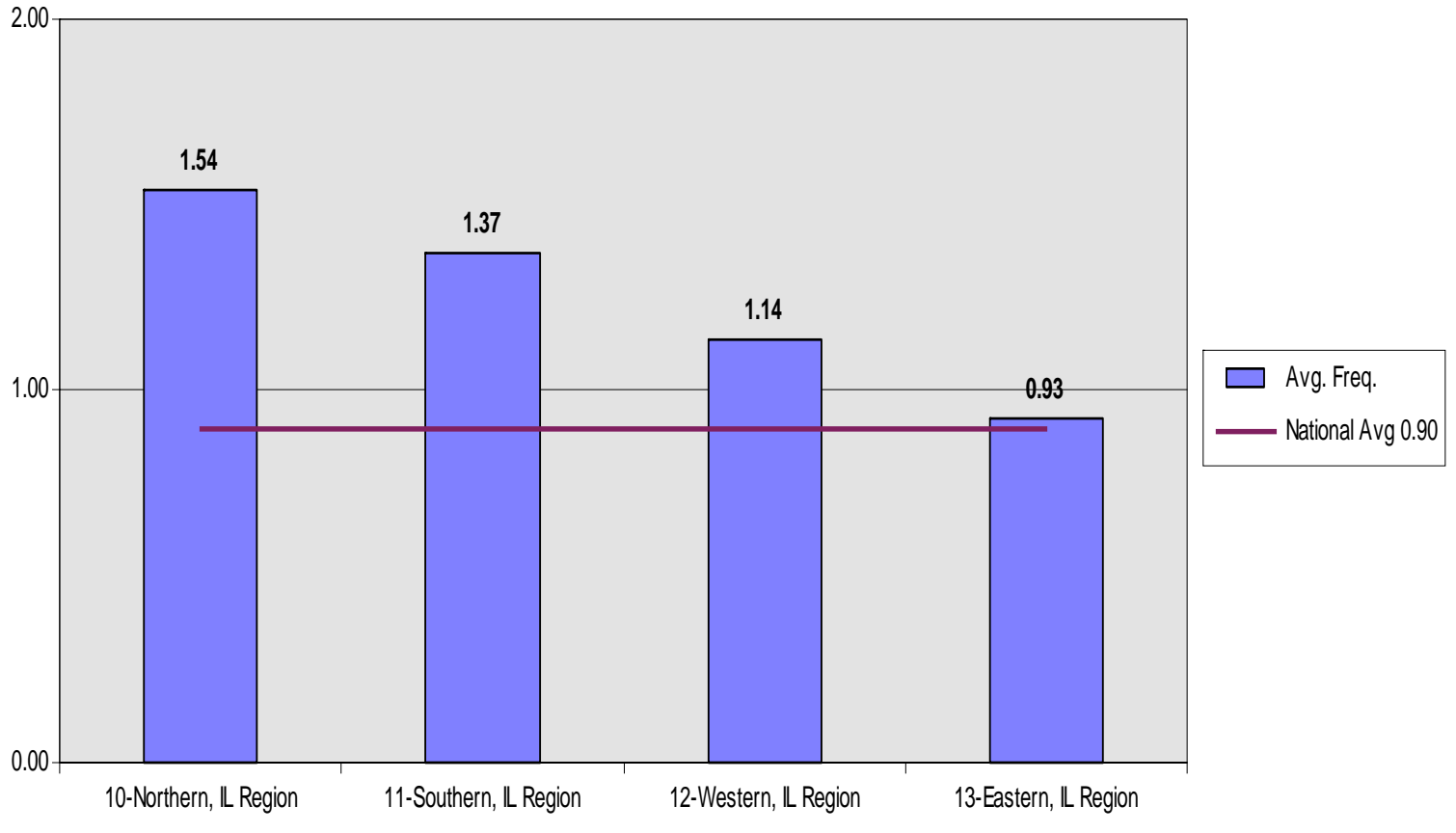


	A	B	C	D	E	F	G	H
1	Region	Work Comp	Training	Postings	Emerg.Exits	Fire Ext.	Standards	Stock Room
2	10-Northern, IL Region	86.93%	68.71%	61.05%	84.57%	73.11%	82.64%	83.17%
3	11-Southern, IL Region	84.19%	43.40%	68.90%	84.77%	70.99%	86.66%	84.53%
4	12-Central, IL Region	86.34%	64.52%	57.31%	82.77%	67.03%	82.26%	80.53%
5	13-Eastern, IL Region	91.38%	77.07%	69.10%	91.05%	80.26%	87.85%	89.94%
6								

Legend

- Work Comp** 100% = Full Compliance to 7 "Workers Compensation" Key Safety Indicators.
- Training** 100% = Full Compliance to 4 "Training Documents" Indicators.
- Postings** 100% = Full Compliance to 3 "Posting" Key Safety Indicators.
- Emerg. Exits** 100% = Full Compliance to 3 "Emergency Exit" Key Safety Indicators.
- Fire Ext.** 100% = Full Compliance to 5 "Fire Extinguisher" Key Safety Indicators.
- Standards** 100% = Full Compliance to 7 "Store Operations Standards" Key Safety Indicators.
- Stock Room** 100% = Full Compliance to 6 "Stock Room Standards" Key Safety Indicators.
- Safety** 100% = Full Compliance to All the Above Key Safety Indicators.
- Nat.Avg** National Average for the Above.

Confidential Division Average Frequency Rating Thru April, 2006

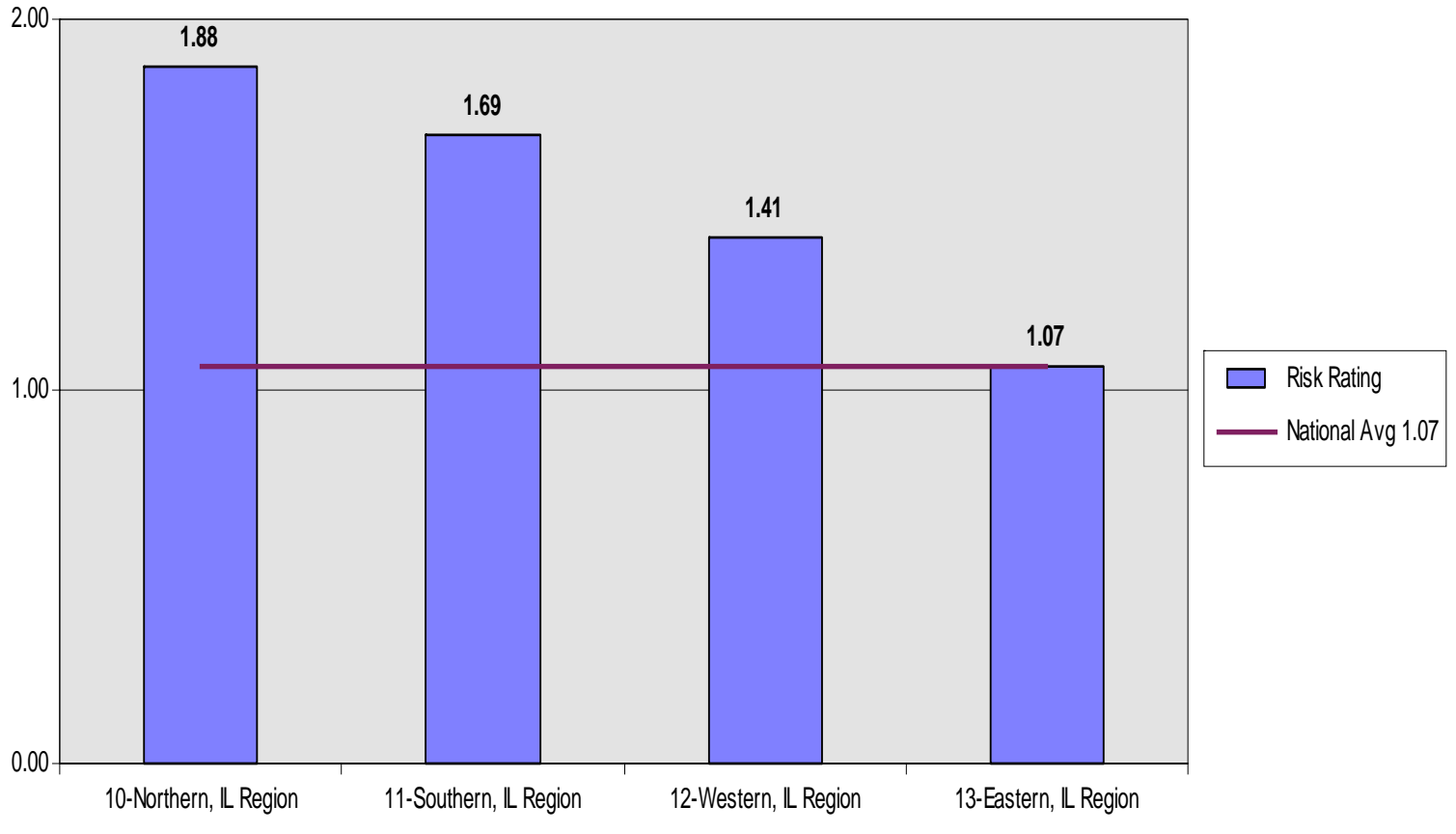


	A	B	C	D	E	F	G	H
1	Region	WC	GL	PL	AL	All Lines	Nat.Avg	
2	10-Northern, IL Region	0.44	0.57	0.53	0.01	1.54	0.90	
3	11-Southern, IL Region	0.35	0.52	0.50	0.00	1.37	0.90	
4	12-Western, IL Region	0.29	0.45	0.40	0.00	1.14	0.90	
5	13-Eastern, IL Region	0.17	0.28	0.48	0.00	0.93	0.90	
6								

Legend

- WC** Average Number of New "Worker Comp" Cases (in the Last 2 Calendar Years) per Location.
- GL** Average Number of New "General Liability" Cases (in the Last 2 Calendar Years) per Location.
- PL** Average Number of New "Product Liability" Cases (in the Last 2 Calendar Years) per Location.
- AL** Average Number of New "Auto Liability" Cases YTD (in the Last 2 Calendar Years) Location.
- All Lines** Average of the New Cases For "All Lines" YTD (in the Last 2 Calendar Years) Location.
- Nat.Avg** National Average for the above Average.

Confidential Division Overall Risk Rating Thru April, 2006



	A	B	C	D	E	F	G	H
1	Region	Safety	Freq.	Risk	Nat.Avg			
2	10-Northern, IL Region	78.45	1.54	1.88	1.07			
3	11-Southern, IL Region	76.49	1.37	1.69	1.07			
4	12-Western, IL Region	75.85	1.14	1.41	1.07			
5	13-Eastern, IL Region	84.92	0.93	1.07	1.07			
6								

Legend

- Safety** The Average % Compliance to All Key Safety Indicators (from the 1st chart).
- Freq.** The Average Number of New Cases For "All Lines" (in the Last 2 Calendar Years) per Location (from the 2nd chart).
- "Risk"** Internal rating value used to compare facility Risk / Safety exposures. The **Safety %Compliance Overall Score** and the **Average Frequency YTD Per Location** are used to develop a snapshot exposure rating for comparison purposes within XYZ Retail facilities.
- Nat.Avg** National Average for the above Overall Risk Rate.